

# INSTALLATION INSTRUCTIONS



## Corona CS Food Processing

Rev. B, 7/2/2014

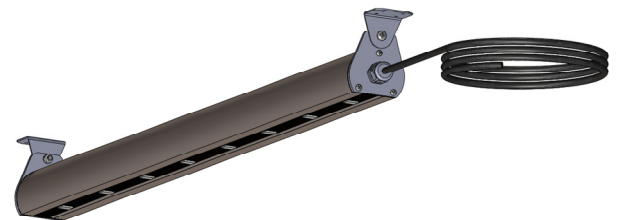
**IMPORTANT:** Read all instructions before performing any work. Be sure all power is off prior to installing luminaire.

**WARNING:** Luminaire must be grounded in accordance with appropriate codes. Failure to do so may result in serious injury.

### Common Wiring Instructions

The following instructions are for wiring the standard (no dimming) Corona CS to a 120-277VAC, 50/60Hz input and should be done by a qualified Electrician.

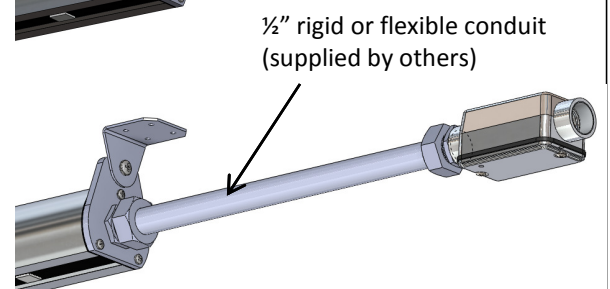
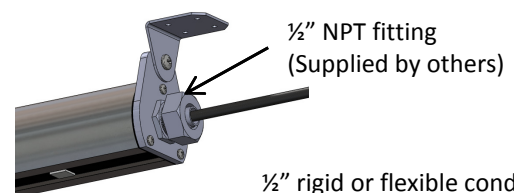
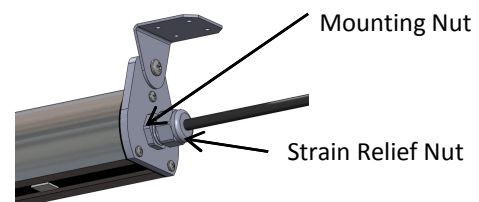
1. The standard Corona CS has a 5' 18GA cable cord. This cord can be installed directly to a junction box using NEC guidelines.
2. Connect the power input wires to the corresponding line voltage wires. Refer to wiring color guide on page 4.
3. Be sure that cable is secure to a surface for strain relief and cord is not use for hanging the fixture.



### Instructions for Installing 1/2" NPT Fitting

The Corona CS can be installed with a 1/2" NPT conduit fitting. This will allow the Corona CS to be directly fitted with a flexible or rigid 1/2" conduit.

1. Remove and discard water tight cord gland by first loosening the strain relief nut and then unscrew the mounting screw next to the end cap.
2. Keep the cable in place.
3. Install the wire through the desired 1/2" NPT fitting and tighten the fitting to the fixture's 1/2" NPT hole on the end cap.
4. Install the input cable through the conduit and proceed with wiring instruction as specified above.



# INSTALLATION INSTRUCTIONS



## Corona CS Food Processing

Rev. B, 7/2/2014

**IMPORTANT:** Read all instructions before performing any work. Be sure all power is off prior to installing luminaire.

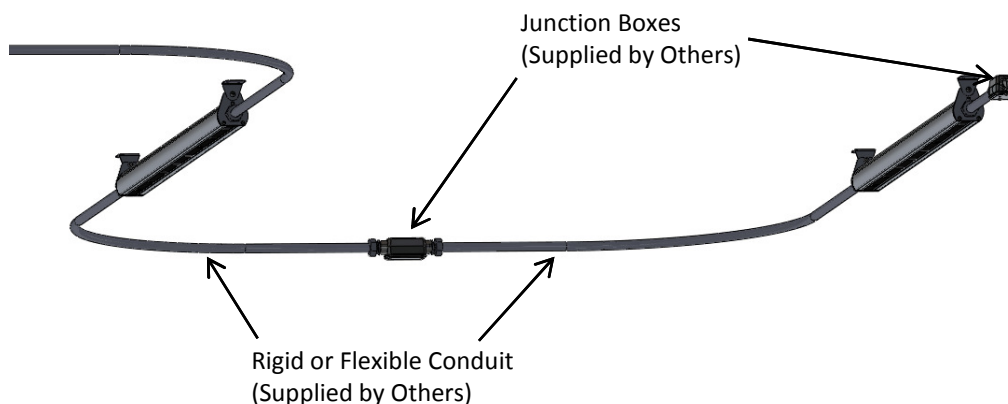
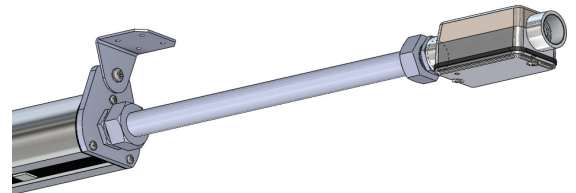
**WARNING:** Luminaire must be grounded in accordance with appropriate codes. Failure to do so may result in serious injury.

### Wire To Wire Installation Instructions

The following instructions are for the “wire to wire “ option used in the Corona. This option is for applications where multiple Coronas are connected in series with 120-277VAC, 50/60Hz line voltage and should be done by a qualified electrician.

1. Determine how many Corona CS fixtures will be on one circuit and their mounting locations.
  1. Note: each 75W Corona CS pulls 0.63A @ 120VAC and 0.27A @ 277VAC
  2. Wire to wire option comes with a 5' long cable with 18ga wire on each end of the fixture.
2. Follow the previous page ½” NPT fitting instructions if using conduit to connect the fixtures. The first fixture in the series must have the input leads wired to it. See “Common Wiring Instructions” for guidelines.
3. At the opposite end of the first fixture install a conduit fitting and conduit leading to a junction box.
4. Repeat this installation to the other fixtures and use a junction box to connect the input wires.

½” rigid or flexible conduit  
(supplied by others)



# INSTALLATION INSTRUCTIONS



## Corona CS Food Processing

Rev. B, 7/2/2014

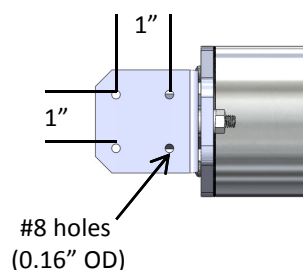
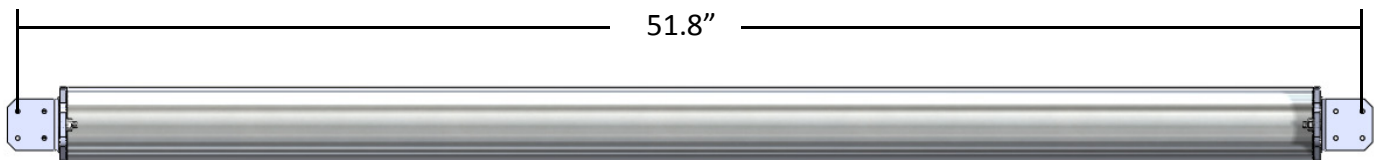
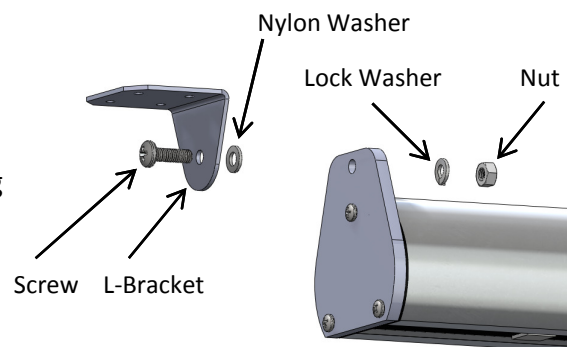
**IMPORTANT:** Read all instructions before performing any work. Be sure all power is off prior to installing luminaire.

**WARNING:** Luminaire must be grounded in accordance with appropriate codes. Failure to do so may result in serious injury.

### Adjustable Surface Mount

For installation the Corona onto a surface using the provided L-Bracket Kit the following instructions should be followed:

1. Remove the L-bracket kit contained in the Corona shipping carton.
2. Attach L-bracket Assembly to the two end caps as shown
3. Mark holes of L- brackets either by using the Corona as a template into surface or use the suggested dimensions.
4. Drill holes into surface and use the appropriate mounting hardware (supplied by others) to mount the Corona to surface.
5. Adjust Corona to target area and tighten nuts to 15 ft/lbs using a torque wrench.



# INSTALLATION INSTRUCTIONS

## Corona CS Food Processing



Rev. B, 7/2/2014

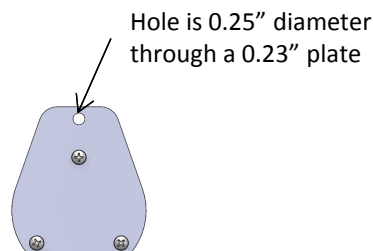
**IMPORTANT:** Read all instructions before performing any work. Be sure all power is off prior to installing luminaire.

**WARNING:** Luminaire must be grounded in accordance with appropriate codes. Failure to do so may result in serious injury.

### Pendant Mount

For installation the Corona using a pendant cable system the following instructions should be followed and should be done by a qualified Electrician :

1. Discard the L-bracket kit contained in the Corona shipping carton.
2. Use an appropriate pendant cabling system for the 10lbs. load that the Corona would carry. We recommend you contact a cable suspension vendor such as Grip Lock Systems. Below are the end cap dimensions which are needed for sizing the correct cable suspension.



### Review wiring options for proper wire configuration.

**Figure 1.1**

Wiring Guide  
 Black = 120-277VAC  
 White = neutral/common  
 Green = ground

0-10V Dimming (optional)  
 Purple = positive  
 Gray = negative

**Figure 1.3**

Wiring Guide  
 Red = 120-277VAC  
 Blue = neutral/common  
 Yellow w/ green stripe = ground

0-10V Dimming (optional)  
 Purple = positive  
 Gray = negative

**Figure 1.2**

Wiring Guide  
 Brown = 120-277VAC  
 Blue = neutral/common  
 Green = ground

0-10V Dimming (optional)  
 Red = positive  
 Orange = negative